

MOD. **SOLO** 

ARTICOLO: KC44E - KC35

DA CREMAGLIERA A MONTANTE ELETTRIFICATO
FROM RACK TO ELECTRIFIED UPRIGHT



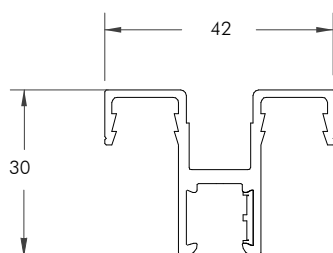
RIPIANO IN METALLO
LED INTEGRATO
Integrated led metal shelf



RIPIANO IN METALLO
Metal shelf



KC44E

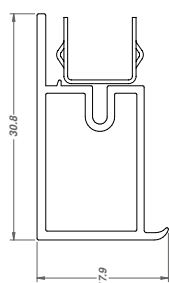
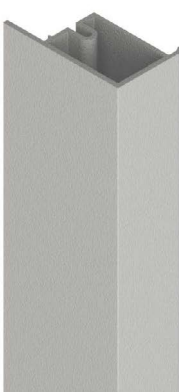


Cremagliera elettrificata centrale singola feritoia

Electrified central rack with single slot

Misure/Size: 2494-3012 mm.
Finitura/Finishing: AA-AN
Confezione/Pack: 1 pz./pcs.

KC35

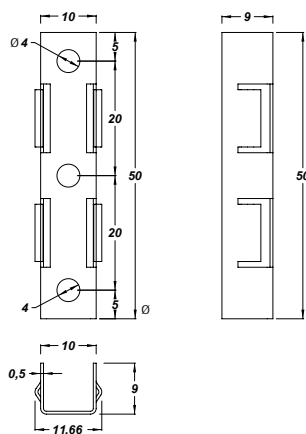


Profilo laterale

Side profile

Misure/Size: 2494-3012 mm.
Finitura/Finishing: AA-AN
Confezione/Pack: 1 pz./pcs.

KF01



Clips

Fixing clip

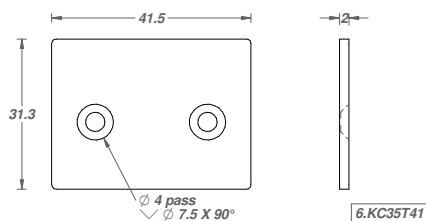
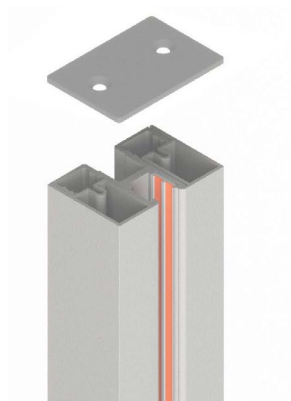
In acciaio armonico, per il fissaggio a scatto del pannello sulla cremagliera o sul profilo.
Stainless steel clip for fixing the wooden panel on the upright.

Forza/pull-out: 12 kg. (KF01)
Confezione/Pack: 10 pz./pcs

Fissaggio con vite autofilettante TC 2,9x5 mm
Fixing with self-threading screw TC 2,9x5 mm

In acciaio inox per le normative di sicurezza
Stainless steel safety regulations.

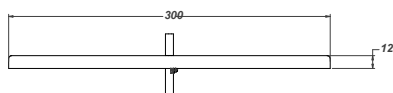
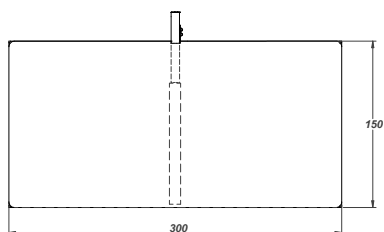
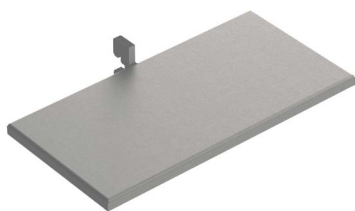
KC44-35T



Terminale

Terminal

Misure/Size: 31.3x41.5 mm.
Finitura/Finishing: VA, NT
Confezione/Pack: 1 pz./pcs.

KME37.15x30xx**Ripiano elettrificato (Led a parte)***Electrified shelf (led apart)*

Misure/Size: 300x150 mm.

Finitura/Finishing: VA

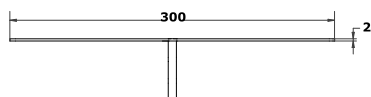
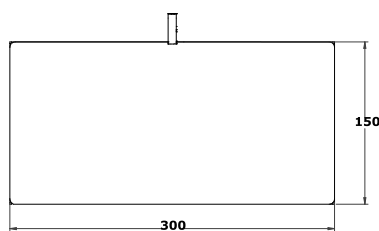
Confezione/Pack: 1 pz./pcs.

DLE31L**Lampada magnetica PMMA 10x10***Magnetic lamp PMMA 10*

Fissaggio magnetico

1W 24V EFFY PLUS

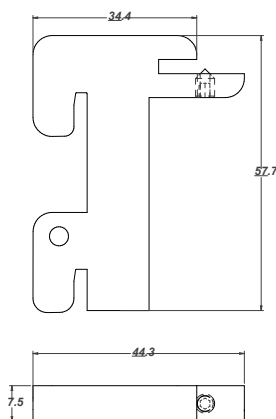
Confezione/Pack: 1 pz./pcs.

KM27.15x30xx**Ripiano metallo***Electrified shelf*

Misure/Size: 300x150 mm.

Finitura/Finishing: VA

Confezione/Pack: 1 pz./pcs.

KM27.3xx**Supporto metallo plex***Metal plex support*

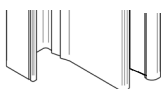
Misure/Size: 44.3 x57.7

Finitura/Finishing: VA

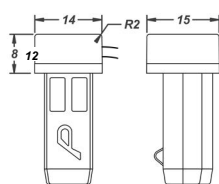
Confezione/Pack: 1 pz./pcs.

KCE02

KCE02S



KCE02I

**Connettore di testa***Frontal connector*

Inserimento superiore o inferiore

Upper or lower setting with cable L. 2000 mm

Finiture/Finishing: grigio, bianco, nero

grey/white/black

Art.	Connector	conf./pcs.
KCE02S*	doppio superiore	1
KCE02I*	doppio inferiore	1



ABOUT US

Pavanello S.r.l. da oltre 25 anni punto di riferimento in Italia e in Europa nel settore della tecnologia, della ferramenta e degli accessori per l'arredamento.

La nostra **Logistica Automatizzata** tramite magazzini verticali permette di servire i clienti in modo rapido ed efficiente.

Oltre a vantare di un **fornitissimo Magazzino Ferramenta** delle migliori marche, Pavanello ha avviato da diversi anni Metalika: polo produttivo specializzato nella produzione di: **Sistemi per pareti attrezzate, con accessori innovativi a tecnologie led**

Il nostro Staff composto da personale esperto ed appassionato, guida il cliente nelle diverse fasi della **progettazione** sino alla realizzazione del progetto finale.

Pavanello S.r.l. for over 25 years a point of reference in Italy and in Europe in the field of technology, hardware and accessories for furnishing.

Our Automated Logistics through vertical warehouses allows us to serve customers quickly and efficiently.

In addition to boasting a well-stocked Hardware Warehouse of the best brands, Pavanello has been running Metalika for several years: a production center specializing in the production of: Wall-mounted systems, with innovative LED technology accessories

Our Staff, composed of experienced and passionate staff, guides the client in the various phases of the design up to the realization of the final project



Pavanello Srl

Via A. Diaz, 21 - 31048
San Biagio di Callalta (TV)
Tel. +39 0422.890380 - Fax +39 0422.890312
E-mail: info@pavanello.eu

Follow:



www.pavanello.store