



# SMART MINITRACK SYSTEM 2020-2021





Since1993

**One shop, One light**

# SMART MINITRACK SYSTEM

## Statement by the Reddot Design Award 2019

As a technically sophisticated and compact product solution, this spotlight system enables effective illumination even in narrow spaces.



**DESIGN  
AWARD  
2019**



**reddot design award  
winner 2019**



**FINALIST  
2019**

# One shop, One light

There are many lighting types in retail lighting design, such as general lighting, accent lighting, and task lighting, is it possible to use one light fixture to solve all the lighting requirements? Yes, it is SMART MINITRACK SYSTEM. And that's why SMART MINI-TRACK SYSTEM developed. The light designer could use it in various possibilities.



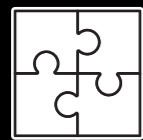


# Modularity

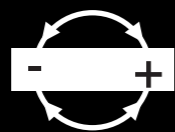
One Linear light

One fix spots

One adjustable eyes



Free combination



Polarized free



Color: black / silver



MINITRACK EYES  
MINITRACK EYES-L1-24V  
L:50mm



MINITRACK EYES  
MINITRACK EYES-L2-24V  
L:100mm



MINITRACK EYES  
MINITRACK EYES-L3-24V  
L:150mm



MINITRACK SPOTS  
MINITRACK SPOTS-L2-24V  
L:150mm



MINITRACK SPOTS  
MINITRACK SPOTS-L4-24V  
L:300mm



MINITRACK LINEAR  
MINITRACK LINEAR-L7/L28/  
L56/L112/L168/L196-24V  
L: 30/150/300/600/900/1049mm



Linear Angular Joint  
MINITRACK-031  
25x25mm



No Light Angular Joint  
MINITRACK-032  
25x25mm



Showcase Angular Joint  
MINITRACK-033  
35x26mm



Showcase Angular Joint  
MINITRACK-033  
35x26mm



Blind Cover  
MINITRACK-034  
L:100mm



Blind Cover  
MINITRACK-034  
L:100mm



Input Connector  
MINITRACK-011  
L:2500mm (wire)



Input Connector  
MINITRACK-011  
L:2500mm (wire)



Linear Joint LINEAR  
MINITRACK-035  
L:150mm (LED)



Linear Side Power Feed  
MINITRACK-012  
L:2500mm (wire)

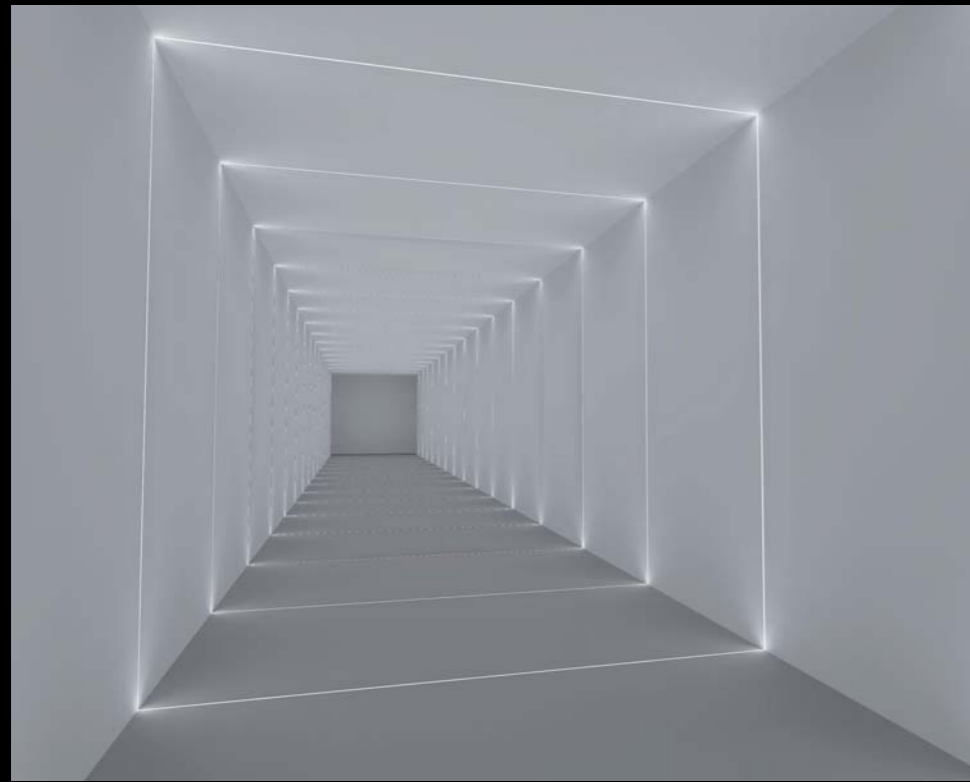


Track (Track of Free-cut Length)  
MINITRACK-001: 1100x12.5x10.5mm  
MINITRACK-002: 2200x12.5x10.5mm

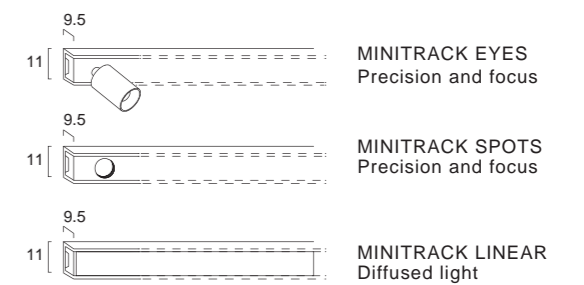
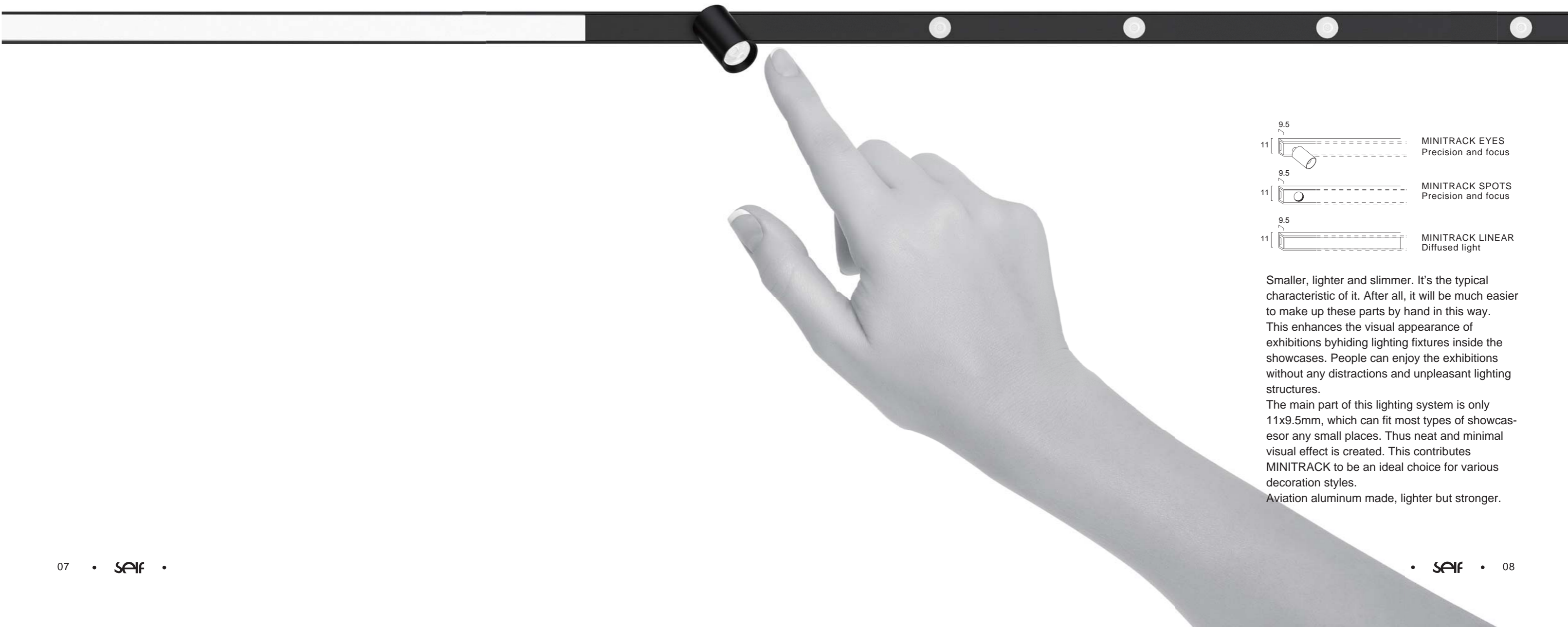


Track (Track of Free-cut Length)  
MINITRACK-001: 1100x12.5x10.5mm  
MINITRACK-002: 2200x12.5x10.5mm

# Applications



# Smaller, Lighter and Slimmer



Smaller, lighter and slimmer. It's the typical characteristic of it. After all, it will be much easier to make up these parts by hand in this way.

This enhances the visual appearance of exhibitions by hiding lighting fixtures inside the showcases. People can enjoy the exhibitions without any distractions and unpleasant lighting structures.

The main part of this lighting system is only 11x9.5mm, which can fit most types of showcases or any small places. Thus neat and minimal visual effect is created. This contributes MINITRACK to be an ideal choice for various decoration styles.

Aviation aluminum made, lighter but stronger.

# Light Distributions of Maximum Flexibility



20°

MINITRACK EYES



30°

MINITRACK SPOTS



125°

MINITRACK LINEAR



# Attractive Colour Presentation

## CRI>90, High Quality Light Output

Because ambient light reproduces colours differently, the colour rendering index (CRI) is used as reference. The CRI indicates the ratio by which the illuminated object or the illuminated area deviates from the maximum value of 100 (daylight). MINITRACK has an impressively high CRI of 90, which means that it comes very close to natural light and is suitable for colour-sensitive applications such as display cases and special exhibition spaces. The material quality, feel, and colour authenticity of merchandise and artworks need to be rendered as accurately as possible to accentuate objects' value. The especially small light surface of the LEDs and high light density allow the luminaires to perfectly reflect the three-dimensionality of amorphous surfaces. Products with a CRI of 90 are perfect for high-end sales floors and art settings.

Ra(R9) 90(50)



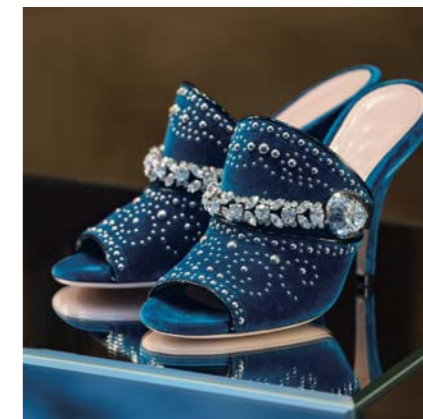
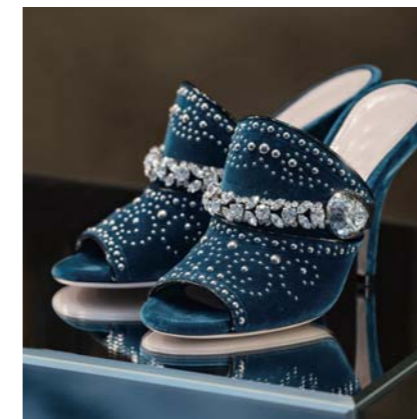
Ra(R9) 97(90) (SELF)



Ra(R9) 90(50)

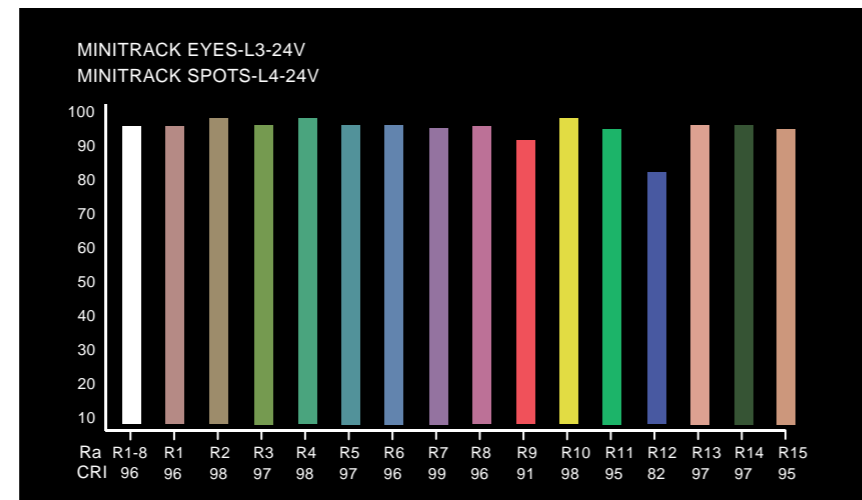


Ra(R9) 97(90) (SELF)



## R9>90, Closer to True Colors

R9 is the index to present the color of Red. Red is a very important icon to many objects like photography, textiles, bones and skins. For human eyes, the red is a key reference to distinguish the real true colors. A higher R9 index can better present the true colors. MINITRACK, with R9 higher than 90, can better present the world closer to true colors.

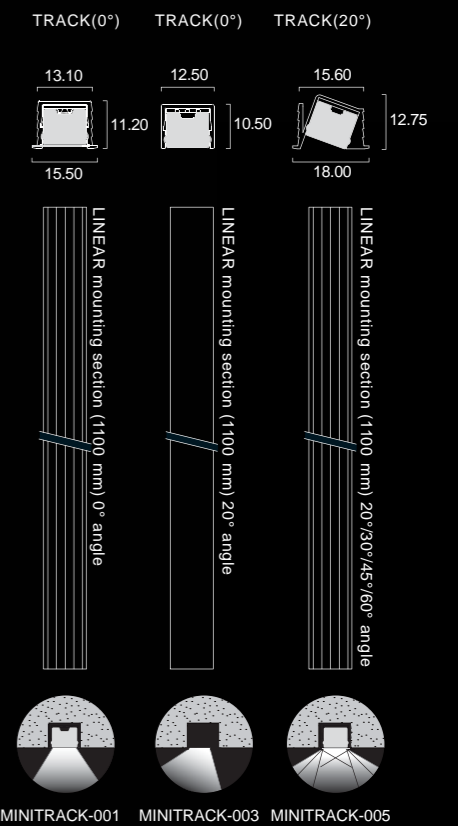


# One, two, three, start your exploration

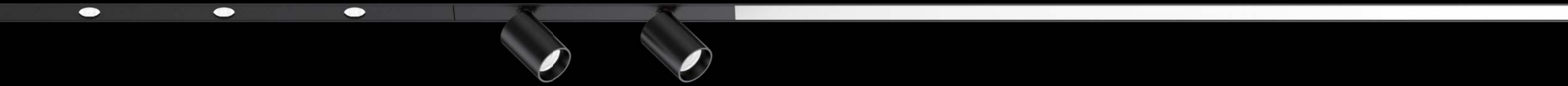
Know about what kind of lighting effect you want. Choose the type of light and the size. Put the luminaire on the track, then press it. Fix it. Yes, you made it. So easy isn't it? Just like playing with building block, different combination has different lighting effects. If you find an amazing effect, you will love it.  
Wish you have fun with our SMART MINI TRACK SYSTEM



### Track mounting sections



# SMART MINITRACK SYSTEM



## MINITRACK EYES



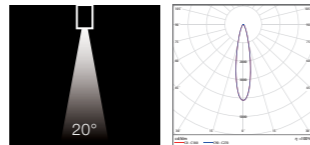
silver



black



Photometrics



### Specifications

Order no.	Model	Input Voltage (V)	Power (W)	CCT (K)	Ra(R9) typ.	Beam angle	Luminous flux (lm)	Luminaire efficacy (lm/w)	Dimmable	Length (mm)	Weight (g)
1030-111135-0132	MINITRACK EYES-L1-24V	24	1.5	3000	97(90)	20°	80	53	True	50	18
1030-111035-0133				4000			59				
1030-111135-0132	MINITRACK EYES-L2-24V	24	2.6	3000	97(90)	20°	160	62	True	100	25
1030-111035-0133				4000			69				
1030-111135-0132	MINITRACK EYES-L3-24V	24	3.7	3000	97(90)	20°	240	65	True	150	36
1030-111035-0133				4000			70				

## MINITRACK SPOTS



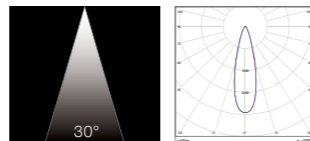
silver



black



Photometrics

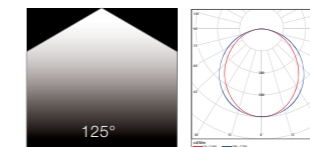


### Specifications

Order no.	Model	Input Voltage (V)	Power (W)	CCT (K)	Ra(R9) typ.	Beam angle	Luminous flux (lm)	Luminaire efficacy (lm/w)	Dimmable	Length (mm)	Weight (g)
1030-102108-0131	MINITRACK SPOTS-L2-24V	24	2.5	3000	97(90)	30°	150	60	True	150	15.5
1030-102008-0131				4000			68				
1030-102108-0131	MINITRACK SPOTS-L4-24V	24	4.8	3000	97(90)	30°	340	71	True	300	30
1030-102008-0131				4000			77				



Photometrics



### Specifications

Order no.	Model	Input Voltage (V)	Power (W)	CCT (K)	Ra(R9) typ.	Beam angle	Luminous flux (lm)	Luminaire efficacy (lm/w)	Dimmable	Length (mm)	Weight (g)
1030-107010-0134	MINITRACK LINEAR-L7-24V	24	0.75	3000	93(50)	125°	62	83	True	30	2
1030-107010-0135				4000			89				
1030-128116-0130	MINITRACK LINEAR-L28-24V	24	2.4	3000	93(50)	125°	210	88	True	150	9
1030-128016-0130				4000			96				
1030-156108-0130	MINITRACK LINEAR-L56-24V	24	4.8	3000	93(50)	125°	420	88	True	300	17
1030-156008-0130				4000			94				
1030-700110-0130	MINITRACK LINEAR-L112-24V	24	9.6	3000	93(50)	125°	830	86	True	600	32
1030-700010-0130				4000			94				
1030-700111-0130	MINITRACK LINEAR-L168-24V	24	14.4	3000	93(50)	100°	1200	83	True	900	46
1030-700011-0130				4000			97				
1030-700112-0130	MINITRACK LINEAR-L196-24V	24	16.8	3000	93(50)	100°	1500	89	True	1049	55
1030-700012-0130				4000			95				